



- ④ The **TMS-NET** microwave radar is designed to collect traffic data and transmit it to a data collector for further processing.

Each measurement consists of the speed, length, and time of detection of the vehicle. Compact and light, it is easy to install and doesn't require civil works nor traffic disruption.



The assets

- Accurate and reliable
- Cost effective
- Above ground technology
- Operation under all weather conditions

④ Why the **TMS-NET** ?

PRACTICAL

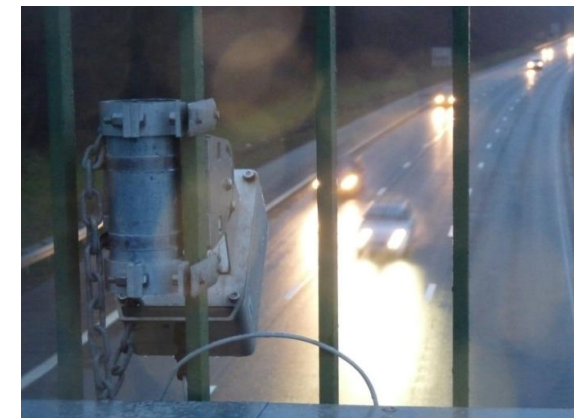
- no maintenance
- delivered ready to install, i.e. including waterproof housing, power and communication cable and universal fixing support

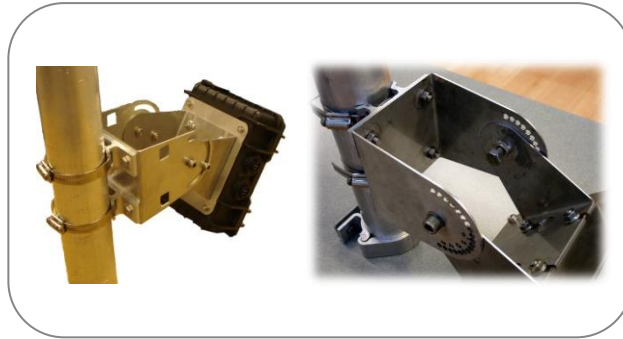
COMFORTABLE

- communication interface RS232 or RS485
- large choice of antennas, allowing different installation type : gantry or side of the road, height up to 10 m
- transmitted data : time in and out of the detection lobe, speed, length and direction.

RELIABLE AND EFFICIENT

- fully weather protected housing
- extended operating temperature range : from - 40 °C to + 75 °C
- environmental insensitivity: dust, heat, intense cold, humidity ... have no influence on the radar's performances.
- installation above ground





Ⓢ Settings

Through software, without opening of the radar

- Sensitivity
- Minimum and maximum speed threshold for detection
- Unit for speed measurement: mph or km/h.
- Time between measurement
- ...

Issue rec :

V1.0 17-03-2014 : DC only

V1.1 20-03-2014 : picture new housing

V1.2 10-04-2014 : dimensions

V1.3 20-03-2015 : dim. LWD – speed range - interface

STANDARDS & APPROVALS



CE (electromagnetic compatibility and electrical safety) : the TMS-NET radar complies with the essentials requirements of Article 3 and the other relevant provisions of the R&TTE Directive 1999/5/CE, when used for its intended purpose (Article 3.1.a : EN 60950 ; Article 3.1.b : EN 50082-2 ; Article 3.2 : EN 300 440-2)

Ⓢ TECHNICAL DATA

Frequency	K-Band : 24.125 Ghz
Range of detected speed	From 15 to 250 km/h
Protection level	IP65
Power supply	10-60 V DC
Power consumption	< 1 VA
Transmitted power	< 5 mW
Operating temperature range	From – 40°C to +75°C
Dimensions	L 220 x W 180 x D 90 mm (excl. bracket)
Accuracy	Speed : 98 % Counting : 98 % Length : +/- 1 m
Interface	RS232 (option : RS485)

Specifications subject to change without prior notice